



WIMBLEDON CHASE PRIMARY SCHOOL

Merton Hall Road
Wimbledon
London, SW19 3QB

T: +44 (0)20 8542 1413

E: wcps@wimbledonchase.merton.sch.uk

W: www.wimbledonchaseschool.co.uk

Headteacher: Mr. K. Ellis B.Ed. (Hons.), M.A. (Education)

Friday, 7th January 2022

Dear Parents,

We have had a lovely week back, the children have been happy and enthusiastic, settling straight back into school life and it was lovely to see the whole school in my virtual assembly today.

I am sure that you know that this week the Government has updated the Schools' Operational Guidance in line with the new national guidance regarding COVID-19. Below is a summary of the changes around testing and isolation; the full guidance for schools can be read following this link: [Schools Operational Guidance updated January 2022](#).

Although it is not a requirement for schools, in order to keep our school as safe as we can, we will continue to inform you if there has been a positive case of COVID-19 in your child's class. You will have seen from my [letter](#) earlier this week that the school has an Outbreak Management Plan if there are a number of cases in the school.

GUIDANCE

Contacts of a Positive Case

All children and young people aged between 5 and 18 years and 6 months, identified as a contact of someone with COVID-19, are strongly advised to take an LFD test every day for 7 days (rather than take a PCR test) and continue to attend their school as normal, unless they have symptoms or have received a positive test result.

If your child has symptoms

If your child has COVID-19 symptoms, please keep them at home and take a PCR test. If the test is negative and they are well enough they may return to school.

If your child tests positive for COVID-19 on an LFD

If your child tests positive on an LFD test then the new guidance means that your child should isolate at home, but from 11th January **you will no longer need to confirm this with a PCR test**.

Reporting a positive result

Please inform us if your child tests positive for COVID-19 (on either test) and keep them at home. Please phone the school office or email parentsupportadvisor@wimbledonchase.merton.sch.uk to inform us.

We will then email you a Google form to complete with your details.

Transforming lives through education, aspiration and inspiration



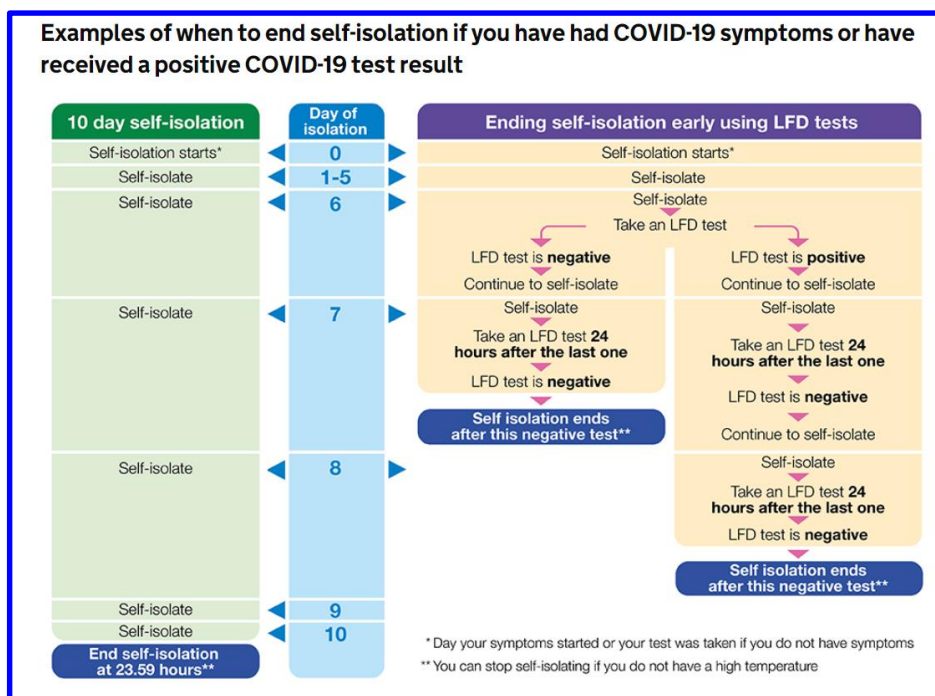
Isolation guidance for Positive Cases

For anybody who has tested positive for COVID-19, it is now possible to end self-isolation following 2 negative LFD tests taken 24 hours apart on days 6 and 7 of the isolation period. **The first LFD test should not be taken before the 6th day.**

The tests must be taken a full 24 hours apart. For example, if a test was taken in the evening of day 6 it would have to be taken in the evening of day 7. If both are negative and there is no high temperature, then your child can return to school on day 8.

If however it was taken on the morning of day 6 and the morning of day 7 then the child can return to school on day 7 providing both were negative results with no high temperature).

This also applies to children under 5, with LFD testing at parental discretion. Anyone who is unable to take LFD tests will need to complete the full 10 day period of self-isolation.



This guidance was updated on 30th December 2021 and can be read following [this link](#).

We will continue to update you with any changes in the guidance, or if there is anything different in the way we operate in school. A copy of the latest risk assessment is available on our school website along with our updated Frequently Asked Questions (FAQs) [here](#).

Remote Learning

For children who have to self-isolate, teachers are providing learning in our Virtual School. Children may need to complete some work (as in lockdown) through the Google Classroom.

We have reissued passwords for Google Classroom to the children (which can be found in their home/school communication book) and teachers will be reminding classes how to access Google Classroom in class computing lessons. Please note that this work only needs to be accessed if the child is well enough.

Staff

During the latter part of the Autumn term, like many schools, we found ourselves under considerable pressure with staff absences and a national shortage of available supply staff. We have worked very hard, and will continue to do so, to ensure that we provide excellent quality, face-to-face education for our children at WCPS.

However, the new variant is showing that it spreads easily and it may well affect our school community again over the coming term. It may be necessary to combine classes or to use staff in school more flexibly, in order to support our school to remain open for all children, but we will continue to keep you informed of any substantial changes as they arise.

Many thanks for your continued support.

Finally

I hope that you will have seen the information regarding the election of a new Parent Governor that was sent out to you this week. **The ballot is now open and will close at 10am on Thursday 20th January 2022.** You may vote for one candidate. Each parent can only submit one vote, regardless of the number of children you have attending the school. You can access the ballot and personal statements of the candidates – Jon Fuller and Prabhu Ramaiah - [here](#).

Have a good weekend.

Best wishes



Mr. K. Ellis
Headteacher

For further information and guidance:

How to order a PCR test if you or your child has COVID-19 symptoms:

<https://www.gov.uk/get-coronavirus-test>

How to report your rapid COVID-19 test results: <https://www.gov.uk/report-COVID19-result>

or call 119 (free from mobile or landline)

Please keep children at home if they are at all unwell, even if they are not displaying typical COVID-19 symptoms.